



Farmer Invented. Farmer Tested. Farmer Proven.®

**ADAPTABLE FOR
ALL CROPS!**



HIGH PERFORMANCE CONCAVE UPGRADE KIT

For Case IH* Mid-Range and Legacy Series Combines

www.CalmerCornHeads.com

(309) 629-9000

Disclaimer: *Calmer is not associated nor affiliated with Case IH. Reference to Case IH is solely for the purpose of identifying the products in which the Calmer aftermarket components are designed to function.

TABLE OF CONTENTS

The History of Calmer 2

FREQUENT CORN HARVEST PROBLEMS & SOLUTIONS

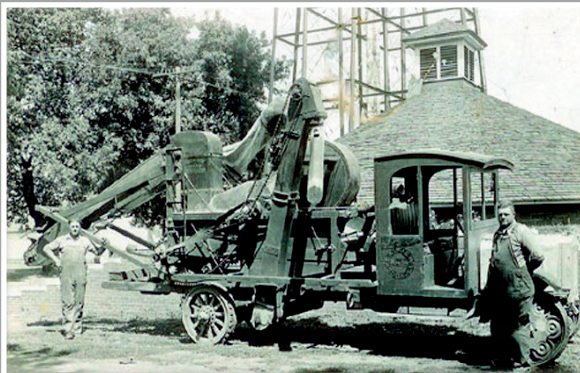
- 1. Rotor Loss 3-4
- 2. Splintered Cobs 5-6
- 3. Damaged Kernels 7-8

FREQUENT SOYBEANS & SMALL GRAINS HARVEST PROBLEMS & SOLUTIONS

- 1. Unthreshed Pods in Sample or Excessive Tailings 9-10
- 2. High Sieve Loss, Excessive Tailings, Chaff in the Grain Tank 11-12

UPGRADE KITS

- Upgrade Kit for Corn 13
- Upgrade Kit for Soybeans/Small Grains 14



1920: Marion's grandfather Ansker and great uncle Barney Calmer were some of the first farmers to put a corn sheller on a solid rubber-tired Model T truck. They used this for several years as they went from farm to farm shelling corncribs.



2013: Marion and his brother Donavin in front of a Calmer 32-row, 15-inch corn head, the world's largest at the time. The water reservoir in the background is the same in the picture to the left of Marion's ancestors.

WHAT FARMERS ARE SAYING ABOUT THE HIGH PERFORMANCE CONCAVE UPGRADE KIT:

"We were very pleased with the quality of the grain and the ability to handle a wide variety of the crop conditions we were encountering."

-John Hohenberger
Northern IL

Mike Shaw-
Central IA

"The fines and quality of corn was way different after running these concaves. The fines went way down and the quality of corn in the sample was much better."

"They did a phenominal job in corn and soybeans. Calmer is all about high quality products and people!"

-Tom Corcoran
Western NY

JC Schemper-
Southern NE

"The concaves and inserts work miracles in Milo!"

"Had an awesome sample in soybeans and corn with the Calmer concaves. Loving them!"

-Frank Szymanski
Eastern MI

Heath Wilken-
Central NE
U.S. Custom Harvesters

"I harvested 7,000 acres of peas, wheat, milo and corn over a 5 month window in 5 different states. The Calmer High Performance Upgrade Kit is user friendly for different crops. Very clean samples and increased capacity."

CORN HARVEST

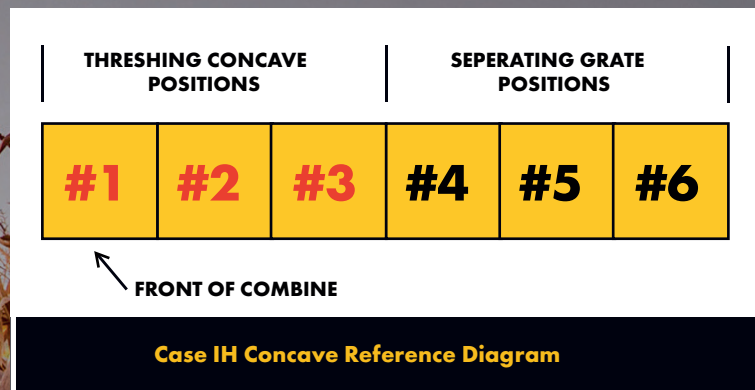
SYMPTOM 1

Rotor Loss

Problem: OEM Large Wire Concave spaces between wires + bars is too narrow for corn

What Causes the Problem?

Large wire concaves have been used successfully for many years in older combines that were smaller and designed to handle lower corn yields than grown today. In today's high-yielding, higher-moisture harvesting conditions, combines now have more horsepower and bigger appetites; however, these advancements have overwhelmed the capacity of the concave designs that had worked sufficiently in the past. Because of this limitation, shell corn is unnecessarily retained in the rotor chamber. This problem results in rotor loss, broken cobs, and damaged grain in the sample.



OUR SOLUTION

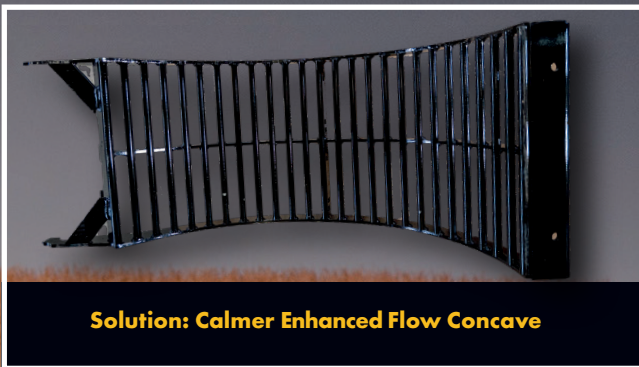
Calmer Enhanced Flow Concaves Utilize Wider Spacing Between Roundbars to Increase Flow in Corn

How Calmer Enhanced Flow Solves the Problem

The Calmer Enhanced Flow Round Bar Concave has wider spacing between bars. This increase in opening space significantly increases flow rates when harvesting wet corn. The unique design of the Calmer Enhanced Flow Round Bar Concave allows shell corn to exit the threshing chamber faster and therefore reduces rotor loss.

Results

You can expect less rotor loss when harvesting corn.



CORN HARVEST

SYMPTOM 2

Broken or Splintered Cobs in the Grain Tank

Problem: OEM Concaves spacing between wires and bars is too narrow for corn

What Causes the Problem?

For corn harvest, factory Large wire concaves have narrow spacings that restrict corn from efficiently escaping the threshing chamber. Combine operators mistakenly try to solve rotor loss by reducing concave clearance. This is counterproductive because it increases compression on the cob which causes the cob to splinter into small pieces. These splintered pass through the sieve and into the grain tank. Below is an exemplary images of this issue



Problem: Case IH Large Wire Concave



Splintered Cobs in the Grain Tank

OUR SOLUTION

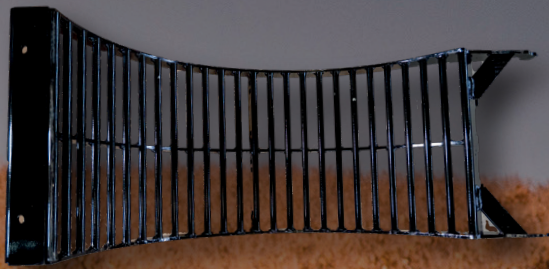
Calmer Enhanced Flow Concaves Utilize Wider Spacing Between Roundbars to Increase Flow in Corn

How Calmer Enhanced Flow Round Bar Concaves Solve the Problem

Calmer Enhanced Flow Round Bar Concaves are aggressive enough to finish removing all kernels from the cob while being gentle enough to reduce unnecessary cob breakage. This unique design allows green material to flow across the round bars without plugging. It also helps retain leaves, husks, and stalks long enough in the rotor area for an easy exit, reducing material other than grain (MOG) from falling into the cleaning chamber. The Calmer Enhanced Flow Round Bar Concave also accelerates the flow rate of shelled kernels falling through the concave into the cleaning system when harvesting high-moisture corn (above 25%), significantly reducing rotor loss.

Results

You can expect a cleaner sample, higher flow rates, and lower sieve loss.



Solution: Calmer Enhanced Flow Round Bar Concave



Clean Grain Tank Sample



**Scan the QR code
with your phone
to see the Calmer
solution.**



SYMPTOM 3

Cracked and Ground Kernels in the Sample

Problem: Factory Large Wire Concaves with Small Gaps Between the Bars in positions #1, #2, and #3

What Causes the Problem?

Case IH Large Wire Concaves have a concave open area (COA) that is too small and therefore restricts flow. With this design, kernels cannot exit the threshing chamber quick enough before they start grinding against each other and become damaged as they wait to leave the chamber. These large wire concaves also have kernel separator bars perpendicular to grain flow which slows flow rates, and contributes to damaged grain.

In high-moisture corn, this flawed design results in kernels becoming lodged between the wires which further reduces flow rates. Adjusting the rotor is not the solution as increasing speed merely creates energy for kernels to exit and damages them in the process.



Problem: Case IH Large Wire Concave



Damaged Kernels

OUR SOLUTION

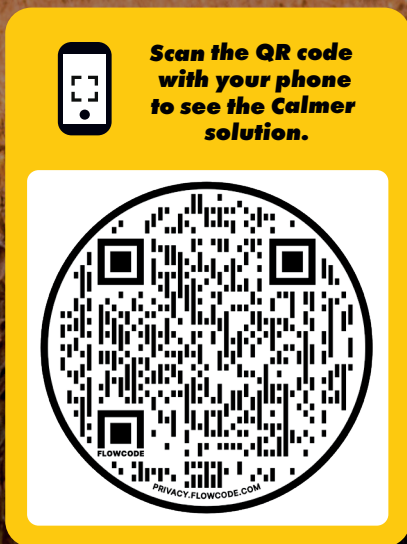
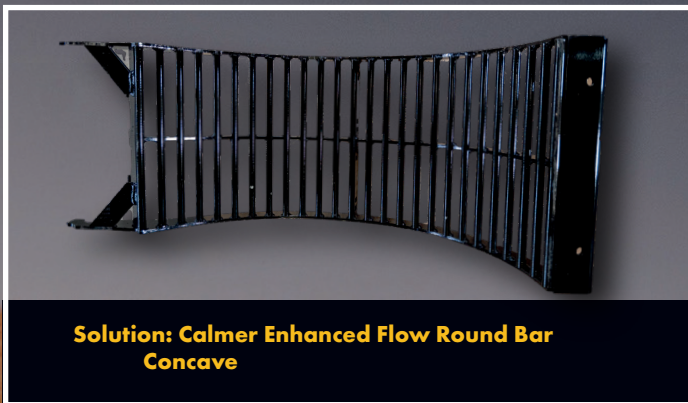
Install Calmer Enhanced Flow Round Bar Concaves in Positions #1, #2, and #3

How Calmer Solves the Problem

Calmer solves this unique problem by installing the Enhanced Flow Round Bar Concaves. The unique concave design allows wet kernels to escape the threshing chamber quickly and reduces the chance of shelled kernels becoming ground into smaller pieces.

Results

You can expect a cleaner sample and less damaged grain.



SOYBEANS & SMALL GRAINS HARVEST

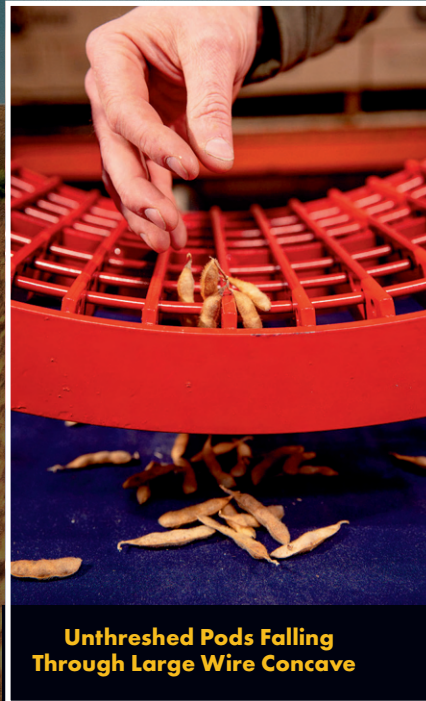
SYMPTOM 1

Unthreshed Pods in Sample or Excessive Tailings

Problem: No Cover Plates Under Concave in Position #1

What Causes the Problem?

When harvesting soybeans, most concaves used for corn and soybeans harvest have openings too large to retain pods or small grain heads long enough for them to fully thresh. These unthreshed pods or heads then fall from the threshing chamber and end up on the top sieve. Once the unthreshed grain is in the cleaning system, it eventually overloads the bottom sieve causing unthreshed pods/heads to appear in the grain tank. Simply tightening the bottom sieve sends the pods/heads back for a second pass to be rethreshed and unnecessarily sends back threshed grain which causes splits.



OUR SOLUTION

Install Calmer 1/4 wrap Cover Plates to the bottom side of the Calmer Enhanced Flow Round Bar Concave in Position #1

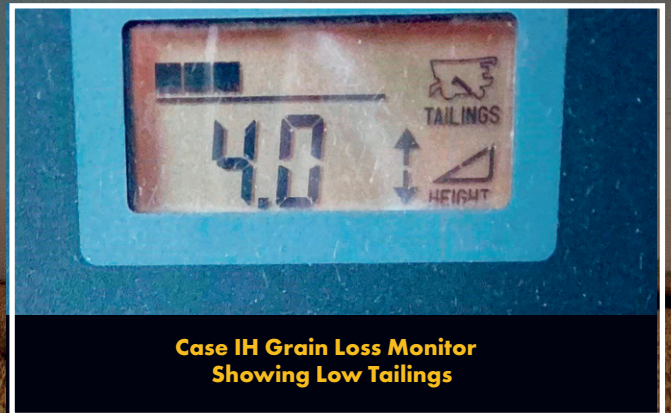
How Calmer Pod Buster Cover Plates Solve the Problem

The Calmer 1/4 wrap Cover Plates retain material to fill the large openings and create a matreess-type surface. This retains the pods and causes them to gently rub against each other as they travel over the horizontal grain separation bars. This action more effectively threshes green and hard-to-thresh pods without damaging the internal soybean or grain.

Results

You can expect a more complete thresh, reduced tailings, and a cleaner grain sample.

Scan the QR code
with your phone to
see the Calmer
solution.



Case IH Grain Loss Monitor
Showing Low Tailings



Fully-Threshed Beans in Clean Sample

SOYBEANS & SMALL GRAINS HARVEST

SYMPTOM 2

High Sieve Loss, Excessive Tailings, or Chaff and Hulls in the Grain Tank

Problem: Unnecessary MOG falling through Large Concave Openings in Chambers #2 & #3

What Causes the Problem?

Most concaves used for corn harvest have large openings to allow high volume of corn kernels to pass through to the cleaning system. When harvesting soybeans, these large openings allow an unnecessary amount of MOG to pass through with the soybeans into the cleaning system. This excessive amount of MOG eventually overloads the chaffer and cleaning system and causes lightweight trash and hulls to end up in the grain sample. This flaw also causes soybeans and small grains to be walked out over the top sieve (chaffer) with the MOG and go onto the ground as sieve loss (see "problem" in below middle image).



OUR SOLUTION

Install Calmer 1/4 Wrap MOG Limiting Concave Inserts into the Round Bar Concaves in Positions #2 and #3

How Calmer MOG Limiting Inserts Solve the Problem

Calmer 1/4 Wrap MOG Limiting Concave Inserts reduce the size of the openings between bars which limit the flow of excessive MOG leaving the rotor chamber. Because the cleaning system now contains a higher percentage of grain and a lower amount of MOG, less air will be required to separate the grain from the MOG on the top sieve, resulting in lower sieve loss (see "solution" in below middle image). Ultimately, fewer soybeans and small grains are walked out of the back of the combine as sieve loss.

Results

You can expect lower sieve loss, fewer tailings, and a cleaner sample.



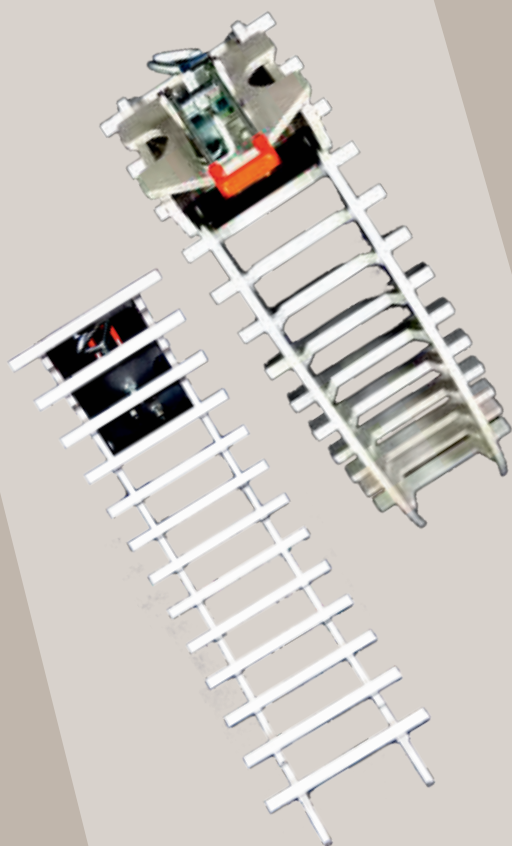
COMBINE UPGRADE KIT FOR CORN



Calmer Enhanced Flow
Round Bar Concave for
Positions #1, #2, and #3

COMBINE UPGRADE KIT FOR SOYBEANS/SMALL GRAINS

Calmer 1/4 wrap Cover Plate for Installing Under Calmer Enhanced Flow Round Bar Concave in Position #1



Calmer 1/4 wrap MOG Limiting Concave Inserts for Enhanced Round Bar Concaves in Position #2 and #3



“The information in this book reflects the things I’ve learned to make harvesting more efficient and profitable throughout my 50+ years of operating harvesting equipment. I hope you found it useful and are encouraged enough to try these parts on your combine. Call my cell phone at (309) 368-1182 with any questions or call our front office at (309) 629-9000 to place your order.”

Marion Calmer

CEO – Calmer

President – Calmer Ag Research Center

Owner/Operator – Calmer Farms

Legal Notice

Calmer may, at any time and without prior notice, modify the content and operation of its website or this brochure, remove or modify the specific patents and/or patent list demonstrated in this brochure or on its website, www.CalmerCornHeads.com.

Calmer possesses a number of patent rights related to its operations, both foreign and domestic, including the following United States Patents: 11,058,058-Narrow Row Head Unit; 11,071,252-Stalk Roll with Multiple Flutes of Different Lengths; 10,785,911-Stalk Roll with Hybrid Flute Having A Sharp Edge and Two Blunt Edges; 10,674,665-Stalk Roll; 10,420,281-Narrow Row Head Unit; 10,045,483-Narrow Row Head Unit Ear Guide; 10,039,232-Stalk Roll; 9,554,511-Method and Apparatus for Stalk Shear Reduction; 9,560,804-Stalk Roll with Flutes Defining a Recess; 9,668,414-Stalk Roll with Series of Flutes Having Decreasing Lengths; 8,857,139-Method and Apparatus for Stalk Shear Reduction; 8,863,487-Narrow Row Head Unit; 8,464,505-Stalk Roll; 8,220,237-Stalk Roll; 8,171,708-Stripper Plate; 7,886,510-Stalk Roll; 7,373,767-Corn Head Row Unit; 7,104,038-Strategic Spatial Realignment for Attaching Cornheads to Combines; 5,704,202-Universal Corn Picking Row Unit; and D494,605-Low Profile Corn Head Row Unit Cover. Calmer also has patents pending pertaining to the threshing technology disclosed in this brochure. Any reference to a company that manufactures and sells combines, or to trademarks of the company are for informative purposes only. Calmer is not affiliated, associated, or otherwise related to any such company. Calmer possesses a number of trademarks. These trademarks are associated with Calmer and its products and are identified by the symbols © or ™. © 2023 – Calmer Corn Heads, Inc., L

Calmer Limited Warranty

Calmer warrants our parts 100%. This warranty is good throughout the first season after purchase of the part. What this means is that if the part breaks within the first season of use, we will replace the part with a new one without charge to you. Calmer pays for the shipping both ways as well. In the alternative, if you wish, we will refund to you all of the money you paid to Calmer for the part. If the Calmer part does not work as you expected, we promise to work with you to adjust the settings and see if we can obtain satisfactory performance. In the end, if the Calmer part does not work on your farm to your complete satisfaction, we will refund your purchase price. Disclaimers: Calmer is not responsible for and does not warrant as to consequential damages or any other types of damages that may be claimed as a result of part breakage or unsatisfactory performance. In other words, except as stated herein, all other warranties or liabilities, expressed or implied, oral or statutory, including any warranty of merchantability or fitness for a particular purpose are expressly denied.



P.O. Box 9 | Alpha, IL 61413 | (309) 629-9000 | fax (309) 629-9001

www.CalmerCornHeads.com

**TO OBTAIN WARRANTY SERVICE
PLEASE CALL 1-309-629-9000**

August 2025